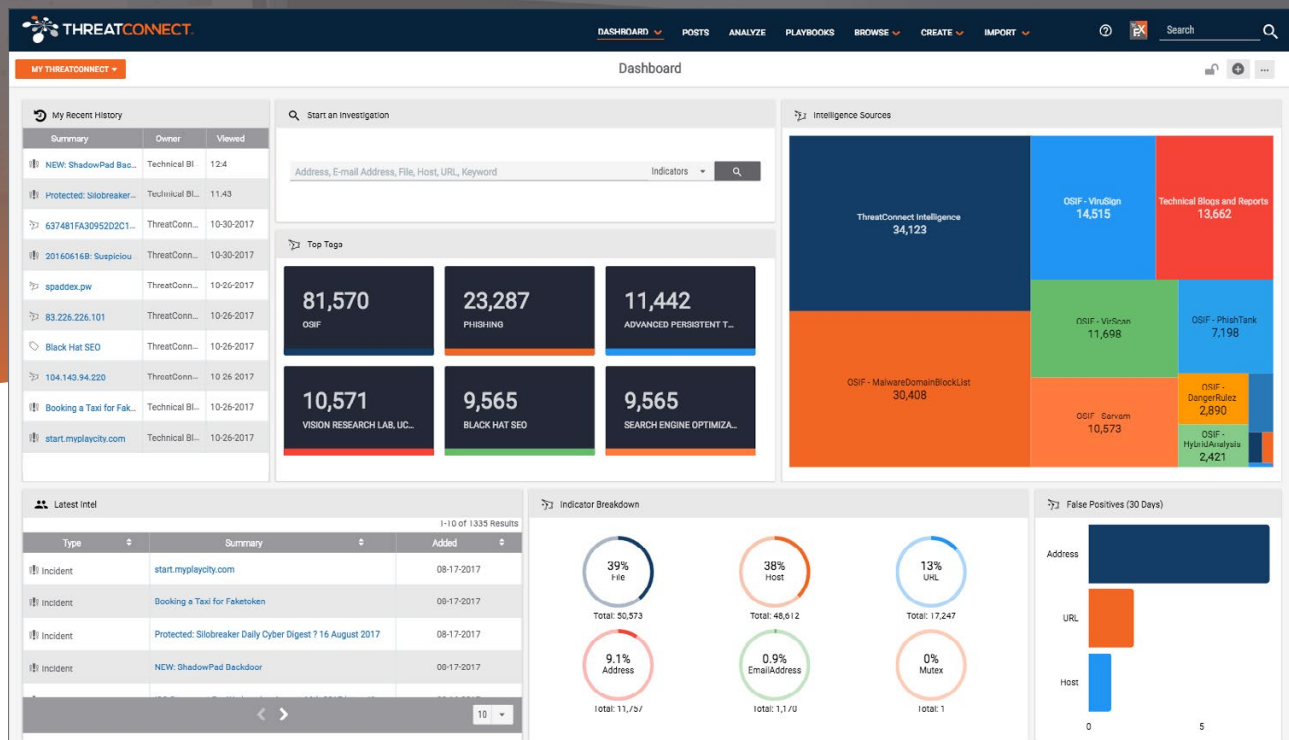


ThreatConnect Dashboards



Gain insight and situational awareness into your threat intelligence and operations.

Easily visualize data that shows the impact of your security efforts and gain a better understanding of the threats your organization faces. Automatically monitor your security operations and intelligence in a way that is actionable and meaningful for you and your team. View, edit, or create custom dashboards to track the metrics that will inform critical decision-making for your security operations.



See Meaningful Data Immediately:

- Choose from three pre-built dashboards to view the data that is most critical and useful for your team, to monitor this week's urgent SecOps needs, or to get more direct insight into your intelligence sources
- Monitor recent history, open tasks, active incidents, observations, false positives, and more, with pre-built and configurable cards
- Drill down from charts and datatables to view specific data and dig deeper

Personalize Dashboards:

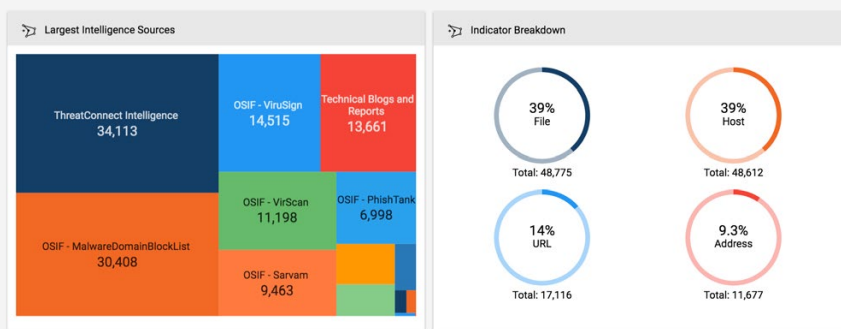
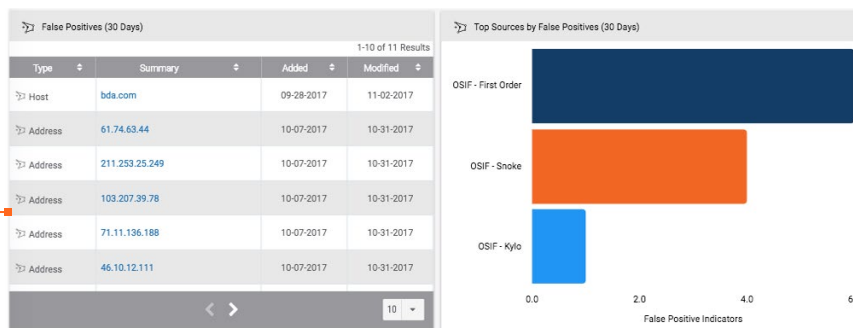
- Drag and resize dashboard cards to prioritize how you view your information
- Clearly articulate impact and actionable insights by presenting your data in the most effective formats including sparklines, bar charts, tree maps, and datatables
- Add custom metrics based on data from inside and outside of ThreatConnect, examples: track open tickets in your case management system to speed up time to resolution, or track activities taking place in your SIEM for increased visibility without leaving ThreatConnect



Build Insightful Dashboards:

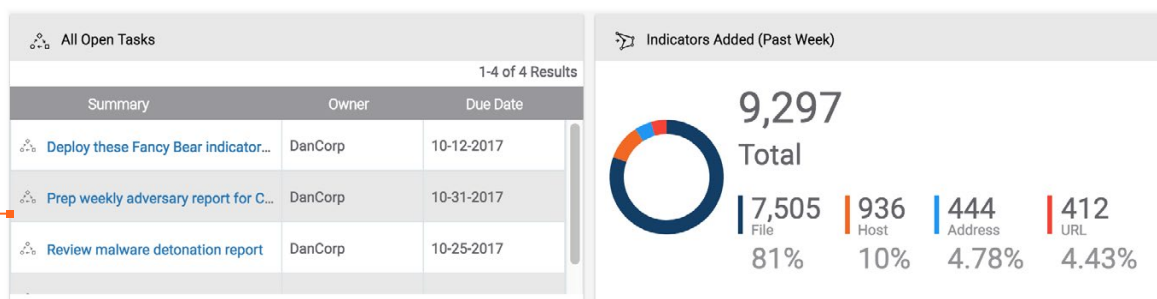
- Build unique dashboards for different teams and personnel: SOC, Threat Hunting, Incident Response, Threat Intelligence, Executive
- Configure multiple dashboards for your own use or easily share them with others in your organization

Quickly Identify False Positives



Easily Evaluate Your Intelligence

Monitor Your Activities in One View



About ThreatConnect®

ThreatConnect arms organizations with a powerful defense against cyber threats and the confidence to make strategic business decisions. Built on the industry's only intelligence-driven, extensible security platform, ThreatConnect provides a suite of products designed to meet the threat intelligence aggregation, analysis and automation needs of security teams at any maturity level. More than 1,600 companies and agencies worldwide deploy the ThreatConnect platform to fully integrate their security technologies, teams, and processes with relevant threat intelligence resulting in reduced detection to response time and enhanced asset protection.